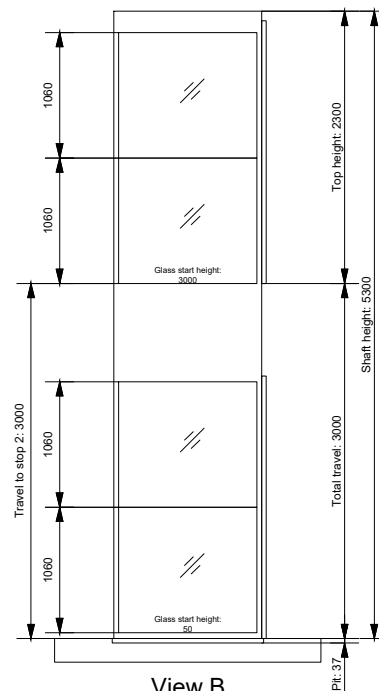
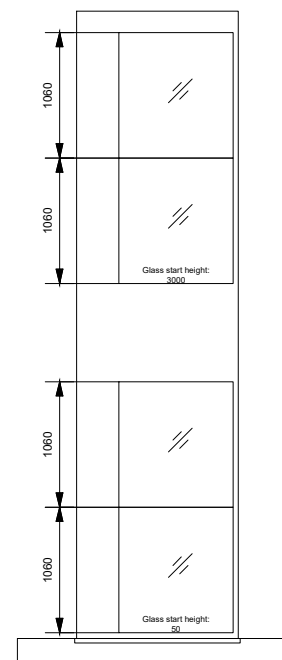


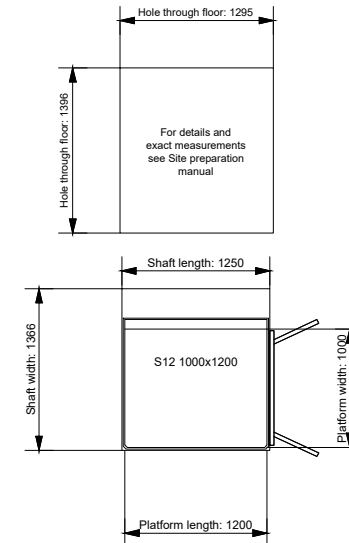
View A



View B

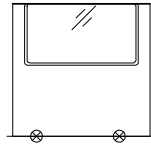


View C

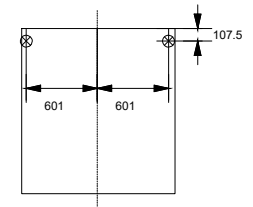


View C View A  
View B

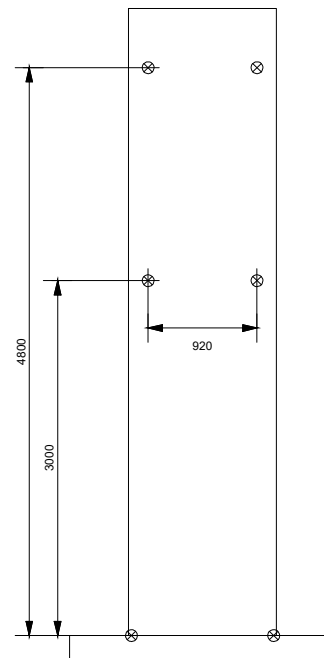
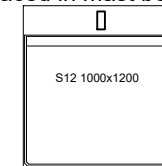
Aritco HomeLift S12 1000x1200			
Ratings	Load: 400kg/5 pers. Speed: 0.15m/s		
Shaft	RAL9016		
DesignWall	Blackside		
Door	FullyCased		
Blackside	White Right		
DesignLight	230V 1-phase		
Driver	Ceiling - Stars		
Ceiling	AutodialerGSM		
Phone			
Floor			
Glass	Clear		
Mast length	5014 mm		
Screw length	4296 mm		
Trailingcable length	5600 mm		
		View A	View B
		Stop 2	View A
		View A	Double door
		Glass	Clear J10
		Stop 1	View A
		View A	Double door
		Glass	Clear J10
Aritco HomeLift			
Revision number: 01			
Order number: AR343843			
Site name: FOR QR CODE			
Ref. no.:			
Order date:		Signature: _____	
November 7, 2025			



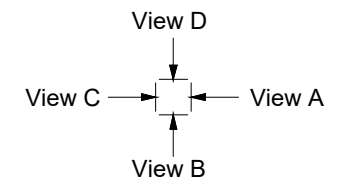
Note that all doors shall  
be fixed to the floor



Incoming power: electrical cabinet  
placed in mast bottom



View D



		Aritco HomeLift	
		Revision number: 01	
Order number:		Site name: FOR QR CODE	
AR343843		Ref. no.:	
	Order date:		Signature: _____
	November 7, 2025		